

RIVERHOMES

Imperial Wharf
Fulham SW6

£1,150,000
Leisure



Imperial Wharf Fulham SW6

A truly pioneering 25-metre houseboat, Wanderland is a one-of-a-kind architectural sculpture conceived by artist Cyril de Commarque. Originally a 1950s Dutch grain barge, this vessel has been reimaged into a striking polyhedral form, its mirrored exterior reflecting the ever-changing moods of the river and sky. Inside, Wanderland offers light-filled, bohemian-inspired living space, with soaring ceilings reaching up to 3.69 metres. The interiors are a harmonious blend of art, nature, and comfort—designed to inspire creativity and contemplation.

Words from the Owner "If you think you understand London, think again. Until you've experienced this magical city through the eyes and ears of the River Thames, you haven't truly felt its spirit. My seven years aboard Wanderland have been utterly transformative. Living on the water—not just beside it—connects you to nature in a way that's deeply intimate and grounding. Wanderland is no ordinary boat. It's a living sculpture, lovingly crafted to foster a connection with the natural world. Onboard, you feel the rhythm of the tides, the dance of light and shadow, and the quiet pulse of the river's life."

KEY FEATURES

2 bedrooms

2 bathrooms

Spacious and light filled interiors

Prime Chelsea location

Length: 25.55m, Beam: 5.06m, Depth: 2.69m

Mooring includes fob access to pier

Parking available by separate arrangement

Electricity is metered

Connected to high speed fibre optic broadband

Design District at Your Doorstep: Located near Chelsea Harbour Design Centre and Lots Road

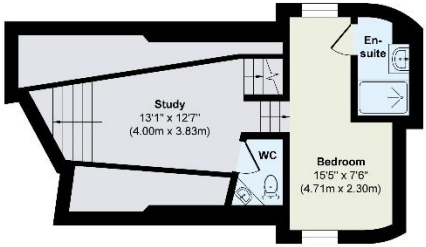
Easy transportation links to the Imperial Wharf Station and Thames River Boat



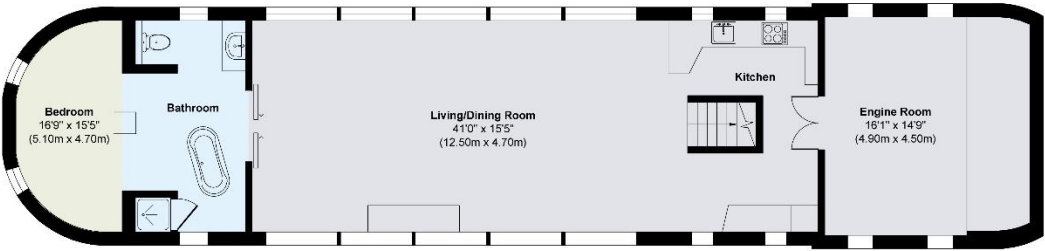


KEY INFORMATION

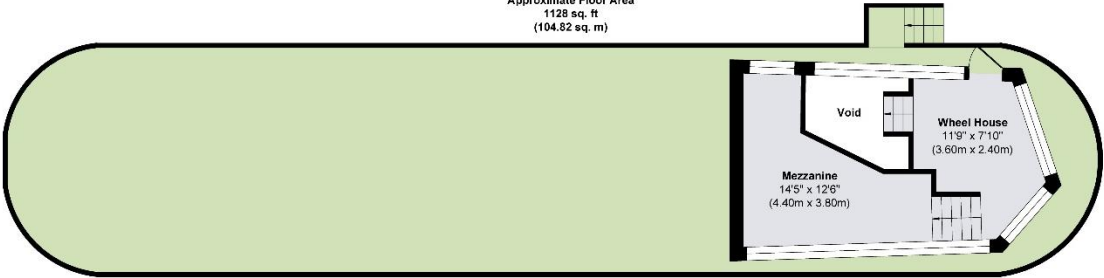
Local authority:	London Borough of Hammersmith and Fulham
Internal area:	1687 sq. ft. / 156.90 sq. m.
No. of bedrooms:	2
Mooring charges:	£20,000 per annum approx.



Lower Deck
Approximate Floor Area
329 sq. ft
(30.63 sq. m)



Upper Deck
Approximate Floor Area
1128 sq. ft
(104.82 sq. m)



Wheel House
Approximate Floor Area
230 sq. ft
(21.45 sq. m)

World Waterside Ltd trading as riverhomes for themselves and its clients give notice that 1: They are not authorised to make or give any representations or warranties in relation to the property either here or elsewhere, either on their own behalf or on behalf of their client or otherwise. 2: These particulars do not form part of any offer or contract and must not be relied upon as statements or representations of fact. Any areas, measurements or distances are approximate. The text, photographs and plans are for guidance only and are not necessarily comprehensive. 3: It should not be assumed that the property has all necessary planning, building regulation or other consents and any services, equipment or facilities have not been tested. 4: Lease details, service charges, ground rent (where applicable) and council tax are given as a guide only and should be checked and confirmed by your Solicitor prior to exchange of contracts. 5: They assume no responsibility and any intending purchasers or tenants must satisfy themselves by inspection or otherwise as to the correctness of each of the statements contained within these particulars. If you require clarification of any points please contact us.